

EPR

Xenon Software Upgrade for the A300 and A200 Spectrometer Series

Integrated Acquisition and Processing

Innovation with Integrity

Introduction

The Xenon software is the EPR software solution providing the answer for reliably and reproducibly acquiring CW-EPR data without the need of an expert. Xenon offers a modern software solution for acquisition and processing of CW-EPR spectra. Xenon is a replacement to WinAcquisit and WinEPR. Take your current A300/A200 system to the next level of software experience.

The Xenon Software Suite

Xenon is a full suite for EPR data acquisition, processing, and analysis. Xenon guides the user from beginning of acquisition through analysis with various targeted workflows.

Acquisition

- Fully calibrated system for quantification
- Automatic sweep resolution
- Automatic accessory recognition

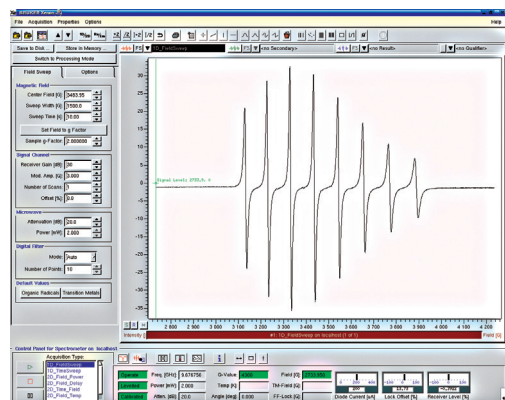
Processing Routines Cover all Aspects of EPR

- Baseline correction
- Double integration
- g-factor reading
- Digital filtering
- Distance reading
- Peak-picking

Data analysis routines

- SpinCount
- Spin trap library
- SpinFit
- $P_{1/2}$ Analysis

Please be aware that WinAcquisit/WinEPR has reached end-of-life and is not officially supported on Windows 11. We recommend upgrading to a supported software and operating system.



The Xenon World for CW-EPR

- Linux based CW-EPR software package
- Integrated acquisition and processing
- Easy to learn & easy to handle
- Spin counting module included
- High precision double integration tool
- Auto resolution setting



Quantitative EPR Package

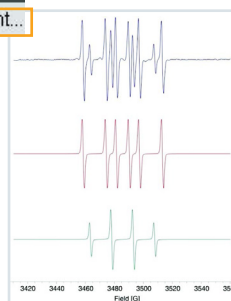
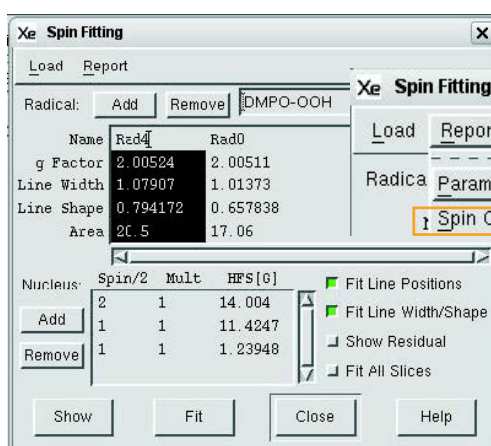
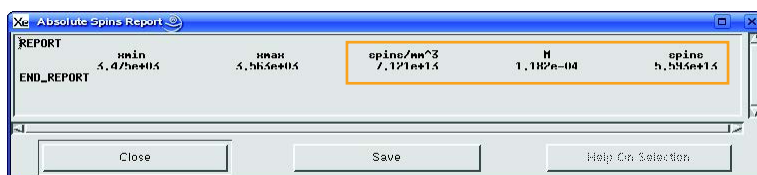
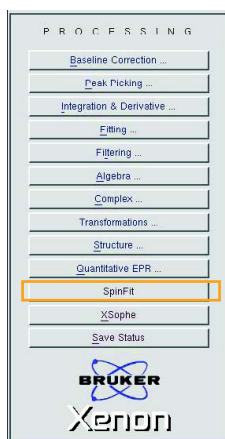
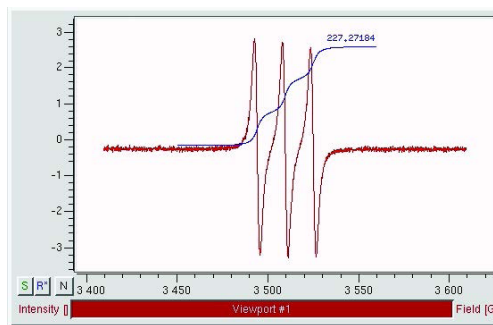
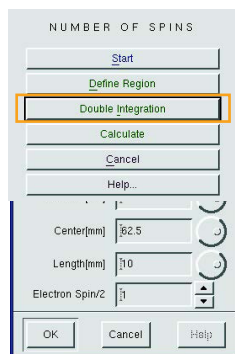
Quantification and identification, the most demanded but challenging analyses in EPR, have become easy tasks with Bruker's SpinCount and SpinFit.

SpinCount for Quantitative EPR

- Single measurement
- No reference sample required
- No need for calibration
- Works with all sample types
- Works at all temperatures

SpinFit for Identification

- Spectrum simulation and fitting for isotropic and anisotropic signals
- Extensive spin-trap library for quick identification
- Library for common EPR solid species
- Integrated SpinCount quantification



Advanced Acquisition Modes

Predefined experiment set-ups for user guided 1D and 2D acquisitions.

Acquisition Modes

- Field Sweep
- Time Sweep
- Field vs Time
- Field vs Power
- Field vs Temperature
- Field vs Sample Angle
- ENDOR

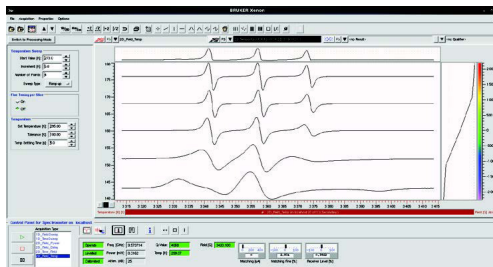


Figure 1: 2D experiment field vs temperature for monitoring the evolution of the EPR spectrum as a function of temperature

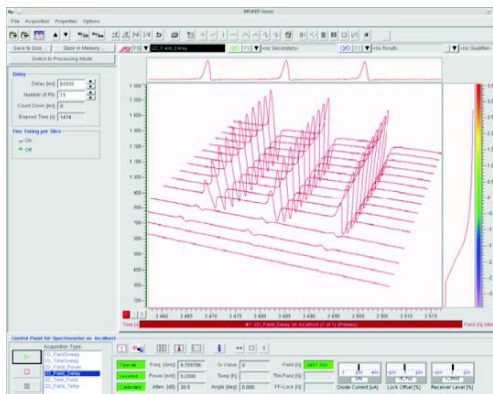


Figure 2: 2D experiment field vs temperature for monitoring the evolution of the EPR spectrum as a function of temperature

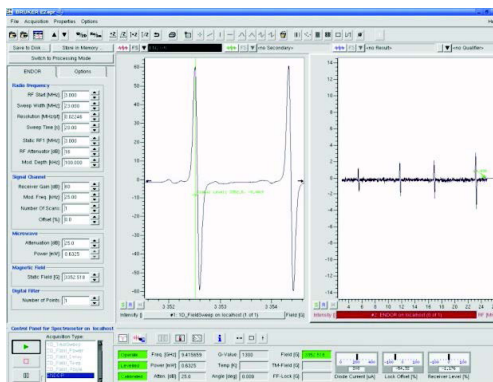


Figure 3: Split screen display for convenient selection of field positions for ENDOR spectrum acquisition

Bruker BioSpin is continually improving its products and reserves the right to change specifications without notice. Order No. BS-100133 © 02/2026 Bruker BioSpin.

Bruker BioSpin
info@bruker.com

bruker.com

Xenon Software

Product End Of Life

