



## MOLECUBES MODULAR BENCHTOP IMAGING

### High-quality molecular imaging for every research lab

At MOLECUBES, we believe that molecular imaging should be accessible to every research lab. It is therefore our mission to lower the barrier to preclinical PET, SPECT and CT imaging by providing compact, intuitive, flexible benchtop imaging solutions with the highest performance, supported by fast and simple workflows. With more than 100 CUBES installed worldwide, MOLECUBES is a trusted partner by your side.



User friendly



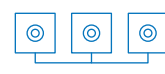
Fast workflow



High precision



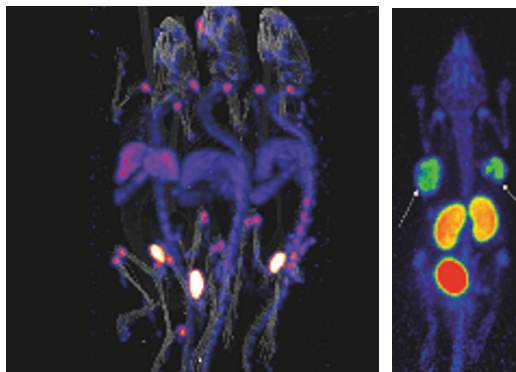
Benchtop



Modular



Best Uptime



**Left:** multimouse SPECT-CT imaging with  $^{99m}\text{Tc}$ -MDP.

**Right:**  $^{18}\text{F}$ -PSMA-11 in a prostate cancer xenograft.

*Courtesy of Piron et al., Ghent University.*

Want to see more applications? Scan the QR code below



For more information please visit [www.bruker.com](http://www.bruker.com)

Innovation with Integrity