



**MALDI Biotyper®**

## **MBT Pathfinder® and Feeder**

A modular approach towards automated MALDI  
target preparation

Innovation with Integrity

IVD/GP/RUO

# Your modular pathway to standardized, documented and fully transparent MALDI target preparation

With the MALDI Biotyper being the gold standard for microbial identification in many laboratories worldwide, the threshold to increase the number of samples for identification has become minimal due to the low consumable cost per sample, ease of use and fast time-to-result.

Automated sample preparation for MALDI-TOF analysis becomes the next logic step to an improved microbiology workflow. Automated MALDI target plate preparation reduces not only manual labor, also the possibility of human errors in sample misplacement and/or possible cross-contamination are minimized. The MBT Pathfinder and Feeder offer the flexibility to increase the level of automation stepwise, from automated reagent deposition only, to complete MALDI target plate preparation, ready for analysis by the MALDI Biotyper.



## MBT Pathfinder & Feeder

### Key features and benefits

- Robotic system for colony transfer and reagent deposition for complete MALDI target preparation, increasing standardization and reproducibility
- Modular system for a flexible and stepwise implementation of automation, in line with the needs of the lab
- Significantly reducing hands-on time
- Preselection of colonies powered by AI software
- Fully documented system with data archive providing full workflow traceability and transparency
- No need for manual picking tools and disposable tips, keeping running costs low and minimizing waste





---

# Elevate your MALDI Biotyper workflow to the next level

**Seeking a slight workflow upgrade for microbial identification, or ready for complete automation? MBT Pathfinder, along with the optional Feeder, is the flexible answer.**

## **Want to say goodbye to manual pipetting?**

The MBT Pathfinder's basic functionality, the reagent deposition module, removes the cumbersome repetitive motion from the MALDI target plate preparation workflow by automated and contactless deposition of precise droplets of formic acid and HCCA matrix onto the sample positions.

## **In need for automated sample transfer from agar to MALDI target plate?**

The MBT Pathfinder can additionally assist in the selection and transfer of microbial colonies from agar to the MALDI target plate. Combined with the automated reagent deposition, the result is a MALDI target plate ready for analysis by the MALDI Biotyper.



---

## **And what if the Petri dishes could be fed automatically into the MBT Pathfinder?**

The Feeder facilitates the placement of culture plates, seamlessly transferring them with a robotic precision from the carousel to the designated position inside the MBT Pathfinder system. Subsequently the abovementioned modules start their work to deliver a MALDI target plate with samples readily prepared for analysis by the MALDI Biotyper. This complete solution includes automated selection of microbial colonies for being transferred to the MALDI target plate.



# Step by step towards automated sample preparation

## MBT Pathfinder - enabling two workflows

### Reagent deposition after manual sample transfer

- Workflow for automated reagent deposition (Formic acid and HCCA MALDI matrix) on MALDI target plates, for microbial identification with the MALDI Biotyper

### Automated sample transfer and droplet deposition

- Workflow for precise colony selection, automated colony transfer and reagent deposition on MALDI target plates for microbial identification with the MALDI Biotyper
- Top and bottom camera to help with manual selection of colonies on the Petri dish
- Front and side camera for process control, complete workflow documentation and transparency
- Expandable with the Feeder

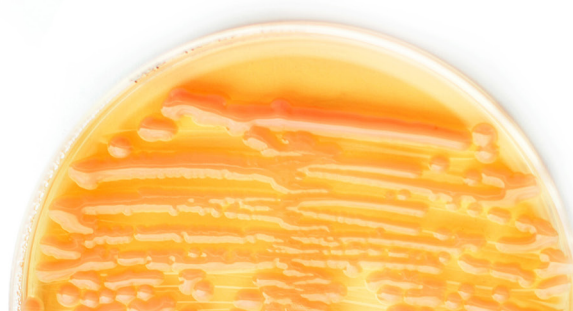
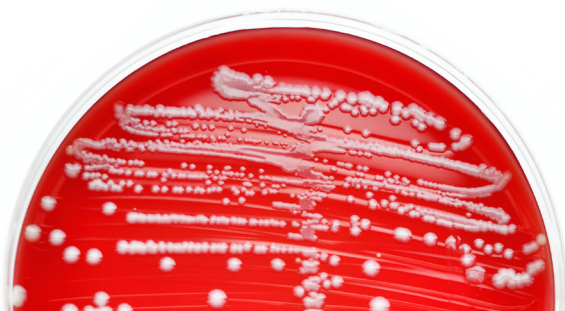
## MBT Pathfinder with Feeder – adding automated Petri dish exchange

- Semi-automated robotic solution combining the liquid reagent deposition and colony transfer functionalities of the MBT Pathfinder with an automated Petri dish exchanger
- Preselection of colonies powered by AI software
- Carousel with a capacity for up to 100 Petri dishes
- Integrated barcode reader for reading of various types of barcodes
- Automated capping/uncapping of Petri dish covers
- Petri dishes are fed into the tray of the MBT Pathfinder by a high precision robotic arm

Drop!

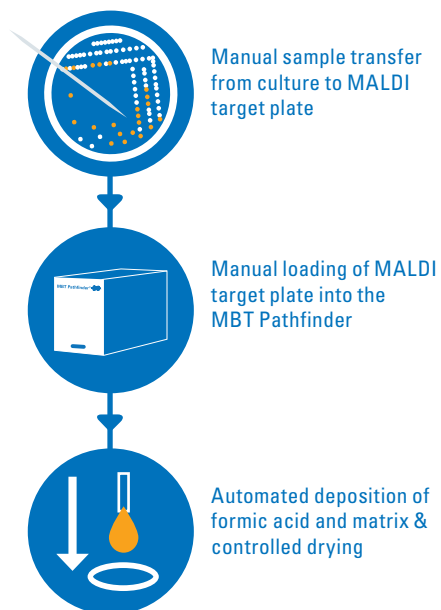
+  
Pick!

+  
Feed!

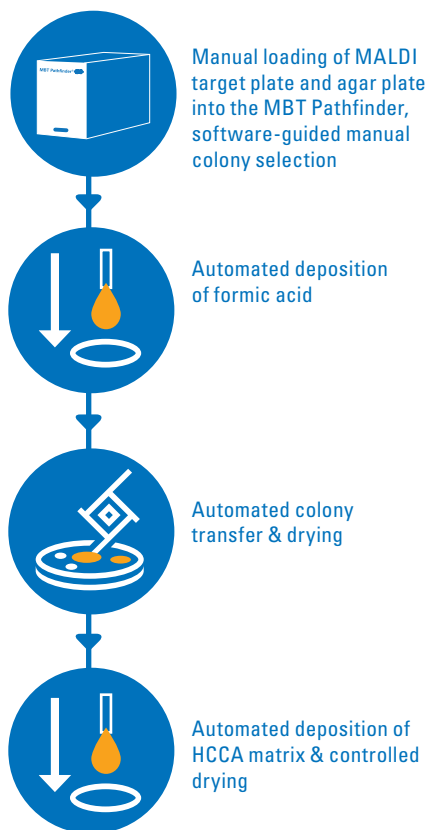


# Build your sample preparation workflow

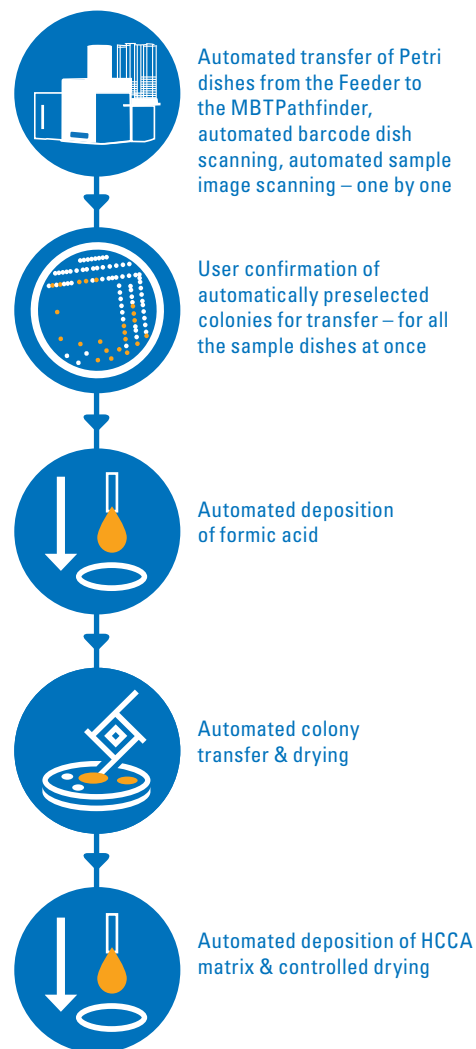
## Drop!



## Drop! + Pick!



## Drop! + Pick! + Feed!



# Order information

## **MBT Pathfinder IVD**

Part No. 1885100

## **MBT Pathfinder GP**

Part No. 1890100

## **MBT Pathfinder RUO**

Part No. 1885150

## **Feeder IVD**

Part No. 1885300

## **Feeder GP**

Part No. 1890355

## **Feeder RUO**

Part No. 1885350

Not for sale in the USA.



Not for use in clinical diagnostic procedures

For Research Use Only.

Not for use in clinical diagnostic procedures.



No. 1915036 © 09-2024 Bruker Daltonics

Please contact your local representative for availability in your country.

MALDI Biotyper® is a registered trademark of the Bruker group of companies.  
MBT Pathfinder® is a registered trademark of the Bruker group of companies  
in the EU, US, and Great Britain.

### **Online information**

[bruker.com/microbiology](https://bruker.com/microbiology)



### **Bruker Daltonics GmbH & Co. KG**

Bremen · Germany  
Phone +49 (0) 421-2205-0

[info.md@bruker.com](mailto:info.md@bruker.com)

### **Bruker Scientific LLC**

Billerica, MA · USA  
Phone +1 (978) 663-3660

