



## XFlash® 6T | 30

- The Mid-Size SDD for Conventional and Aberration Corrected (S)TEM

The XFlash® 6T | 30 with an energy resolution of down to 123 eV is part of the 6<sup>th</sup> generation of Bruker's exceptional XFlash® silicon drift detectors (SDD). XFlash® 6T | 30 features a 30 mm<sup>2</sup> active area sensor.



The XFlash® 6T | 30 offers market-leading energy resolution values of 123 eV at Mn K $\alpha$ , 54 eV at F K $\alpha$  and 46 eV at C K $\alpha$ . This also warrants the excellent light element and low energy range performance.



In combination with the specially adapted SVE 6 hybrid signal processing unit, this detector can accept more than 1,500 kcps at the input and provide an output of at least 600 kcps.



The slim-line technology detector finger of the XFlash® 6T | 30 provides shortest possible detector to sample distances at highest take-off angles ensuring excellent solid angle and minimized absorption and shadowing effects in TEM and STEM.



Light weight and small dimensions in combination with carefully selected construction materials cause least possible impact on the performance of the electron microscope. The motorized high precision slider allows full control over the detector position at all times.

The XFlash® 6T | 30 is designed for use with all varieties of TEM, including aberration corrected instruments and such with high-resolution pole piece.



## Specifications

Available energy resolutions:

123 eV Mn K $\alpha$ , 54 eV F K $\alpha$ , 46 eV C K $\alpha$

126 eV Mn K $\alpha$ , 60 eV F K $\alpha$ , 51 eV C K $\alpha$

129 eV Mn K $\alpha$ , 67 eV F K $\alpha$ , 57 eV C K $\alpha$

All resolutions are specified exceeding ISO 15632:2002 requirements.

Element detection range: beryllium (4) to californium (98)

Input count rate: more than 1,500 kcps

Output count rate: more than 600 kcps

30 mm<sup>2</sup> active area

Fanless Peltier cooling, no elaborate vibration-generating cooling systems required

Immediately ready for operation

Low operating cost

Maintenance-free

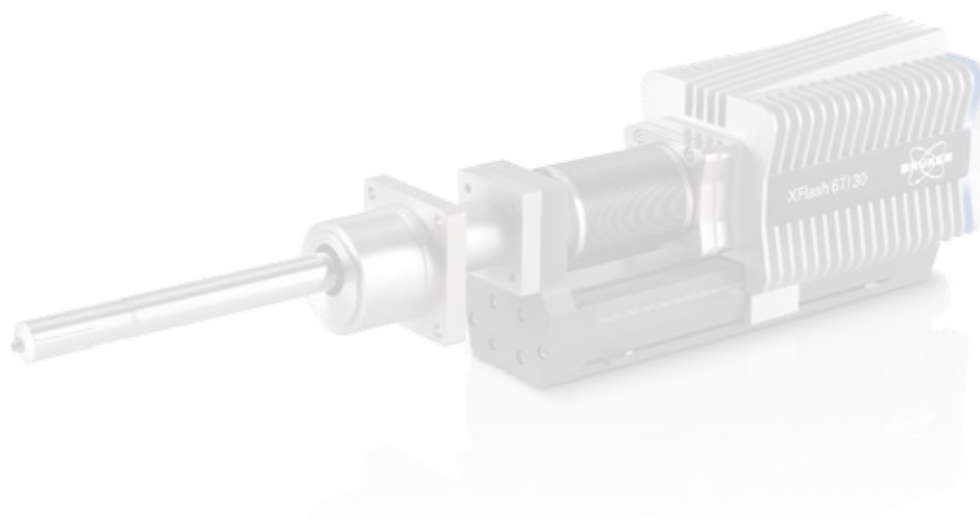
Small dimensions, including slim-line detector finger

Light weight of 3.1 kg

High precision motorized slider

Welded bellows standard

Compatible with all types of TEM and STEM, conventional and C<sub>s</sub> corrected



## ● Bruker Nano GmbH

Berlin · Germany

Phone +49 (30) 670990-0

Fax +49 (30) 670990-30

info.bna@bruker.com

[www.bruker.com/quantax-eds-for-tem](http://www.bruker.com/quantax-eds-for-tem)

