



## Lab Report XRF 446

### Elemental composition of Daphnia

Daphnia are planktonic crustaceans and members of the order Cladocera. Because of their small size of 0.2 to 5 mm and their jumpy swimming style, Daphnia are commonly known as “water fleas”. Their aquatic living environment can range from rivers, streams, lakes and ponds to acidic swamps. Their short lifespan, their reproductive capabilities and especially their sensitivity to contaminants make them an indicator species in the field of environmental toxicology. Daphnia are for instance used to test the effects of toxins on ecosystems. Because Daphnia are almost transparent, their internal organs are easy to examine in live specimens.

The performed examination demonstrates the capabilities of Micro-XRF as a method for the analysis of these biological species regarding elemental composition and the possibility to use it also for environmental control.

#### The samples

A single Daphnia is shown in Fig. 1. The size of the water flea is less than 3 mm. The photo shows the thin, partly transparent body and the head with a large eye. The body is protected by a thin and transparent carapace. The most prominent features are the eyes, the second antennae and a pair of abdominal setae.

Measurements were performed on two samples. One of them was fed with nano-particles which were tagged with Au (sample 2). The samples were prepared on a quartz support that gives a relatively high spectral background due to scattering and a Si fluorescence signal.

## Instrumentation

The measurements were performed with a Bruker M4 TORNADO. This Micro-XRF spectrometer is characterized by the following features:

- Large and evacuable sample chamber of 600 x 350 x 260 mm (W x D x H)
- Fast X-Y-Z-stage with TurboSpeed for fast mappings and distribution analysis on-the-fly
- Effective excitation of fluorescence by high brilliance X-ray tube together with X-ray optics for concentration of tube radiation to spot sizes down to 25  $\mu\text{m}$
- Detection of fluorescence radiation with silicon drift detectors (SDD) with high count rate capability
- Quantification with standardless models using full pattern fitting

## Measurement conditions

The samples were measured with the following excitation conditions: 50 kV, 600  $\mu\text{A}$ . Measurements were performed in vacuum for the first sample and in air for the second sample.

The vacuum measurement was performed with 10 ms per pixel and the air measurement with 500 ms per pixel, respectively. This long time allows the detection even of small element concentrations.

Scanned area for both samples was approx. 3 x 3.5 mm. The map size was 150 x 180 pixels which results in a pixel distance of approx. 20  $\mu\text{m}$ . The total measurement time for mapping was approx. 5 min and 3.8 h, respectively.

## Measurement results

The distribution of the main elements for the first Daphnia sample (no gold) is shown in Fig. 2.

The sum spectrum of the mapping of the first sample is displayed in Fig. 3. This spectrum shows that the main constituent is Ca.

High intensities are also detected for Si (from the quartz support) and from Rh (scattered tube radiation). These intensities can only be detected with measurements under vacuum.

Small intensities are detected for heavier elements like Ti and Fe. The distributions of all detected elements are displayed as single maps in Fig. 4. It can be seen that the main structure of the carapace is formed by Ca and K. The distributions of P and S are very similar.

In comparison to that the distribution of Fe and Ti are clearly concentrated in the alimentary tract. There is a possibility that by the filtering of water suspended sediments from soil with a high content of Fe and Ti minerals are collected in the intestine.

The next measurement was performed on the Daphnia that was fed with the nanoparticles tagged with Au. In that case measurement time was increased to 500 ms, which results

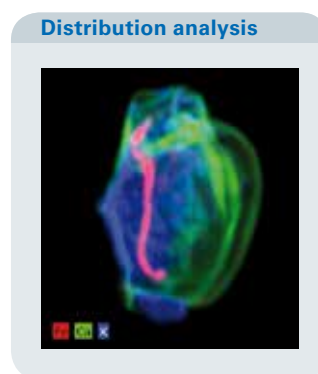
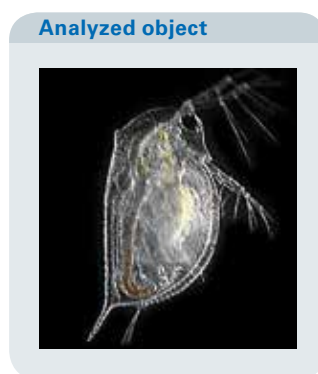


Fig. 1 Image of a Daphnia [1]

Fig. 2 Distribution of main constituents for 10 ms measurement time per pixel and approx. 5 min total measurement time

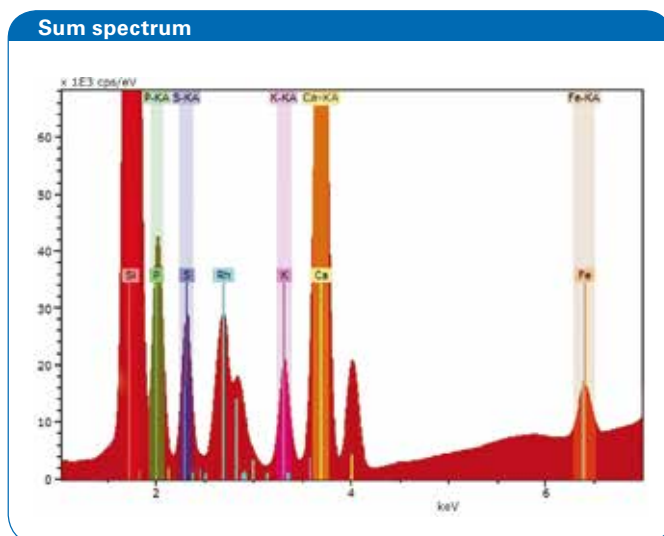


Fig. 3 Sum spectrum of the complete mapping

### Distribution analysis

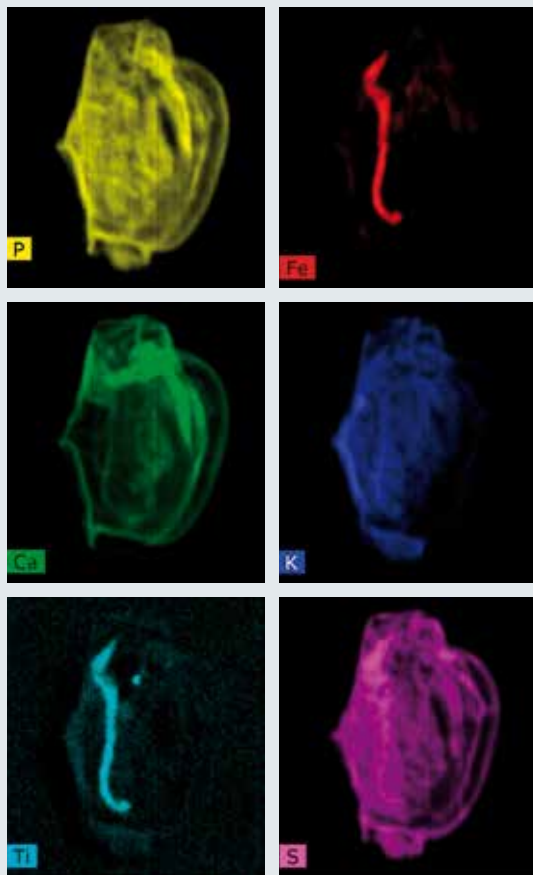


Fig. 4 Distribution of single elements of the first Daphnia sample

### Spectrum comparison

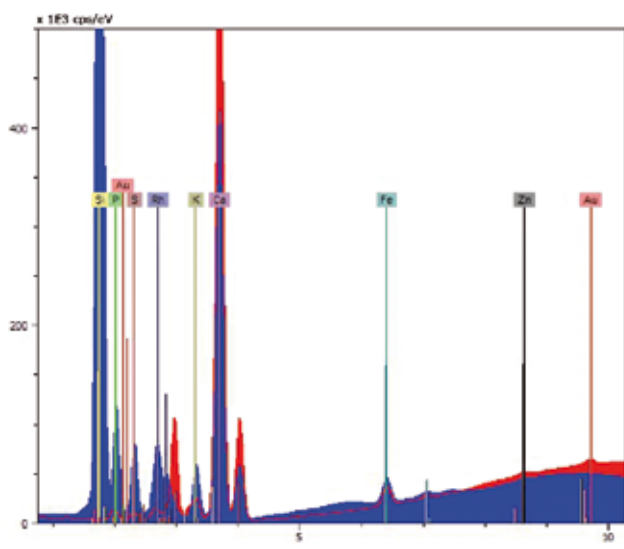


Fig. 5 Spectra for measurement with 10 ms pixel time in vacuum (blue) and 500 ms pixel time in air (red) – normalized

### Distribution analysis on Au-tagged specimen

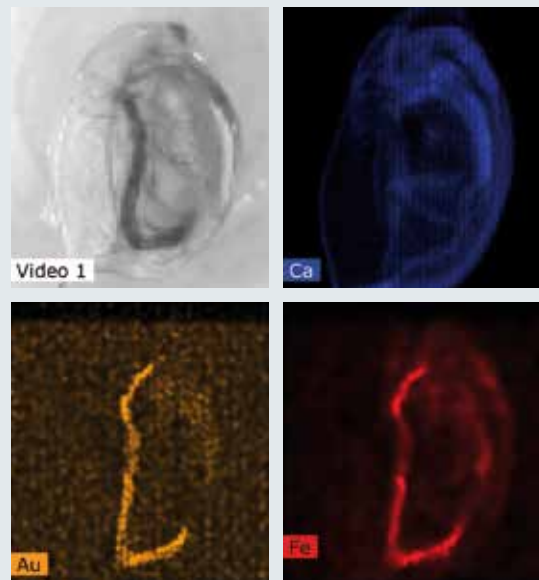


Fig. 6 Distribution of single elements for the sample with Au

in a significantly longer total measurement time of approx. 3.8 h but also in a higher spatial resolution due to better statistics and a higher sensitivity for traces. The normalized sum spectra of both measurements (10 ms and 500 ms measurement time per pixel) are displayed in Fig. 5.

It can be seen that the measurement in vacuum shows the expected significantly higher intensity for Si. Due to the absorption of that radiation in air the intensity in the according measurement is reduced. This is also valid for P and S. For the heavier elements the differences are not so significant. The longer measurement time of the second measurement in air allows the detection of trace elements like Au and Zn. For Au this was expected due to the special preparation of the samples. The elemental distribution measured for the second sample is displayed in Fig. 6.

The distribution for this sample looks slightly different because the water flea is analyzed in another position. But still the structure of the carapace consisting of Ca and the outer shell containing K, P and S can be identified. The structure is more detailed and appears smoother due to the longer measurement time.

The Fe distribution in the alimentary tract can be detected again. Due to the changed position of the sample the position of this tract is changed, too. Additionally Au can be detected apart from Fe. The Au intensity is significantly

less than for Fe but the distributions are very similar, i.e. the Au seems to be in the alimentary tract as well. This can be expected if the water flea has filtered the water containing Au-nanoparticles.

The concentration of Au in these areas is relatively high as it can be seen in the spectra in Fig. 7. One of these spectra is from a single point (blue), the other is the sum spectrum from a larger area (red). The sum spectrum was generated using the HyperMap functionality of the M4 TORNADO software. HyperMap offers the possibility to sum up spectra from several measurement points to obtain a spectrum with good statistics that can even be used for quantification.

## Conclusions

Micro -XRF offers the possibility to examine the elemental distribution in biological samples. Even the distribution of light elements down to Na can be detected in case of measurement in vacuum.

The high excitation intensity and the large captured solid angle of fluorescence radiation results in the high count rates obtained with the M4 TORNADO. Measurements with the M4 TORNADO guarantee the improvement of spatial resolution and allow the detection of smallest traces.

## References

[1] <http://de.wikipedia.org>

## Authors

Dr. Roald Tagle, Ulrich Waldschläger, Dr. Michael Haschke, Bruker Nano GmbH, Berlin, Germany

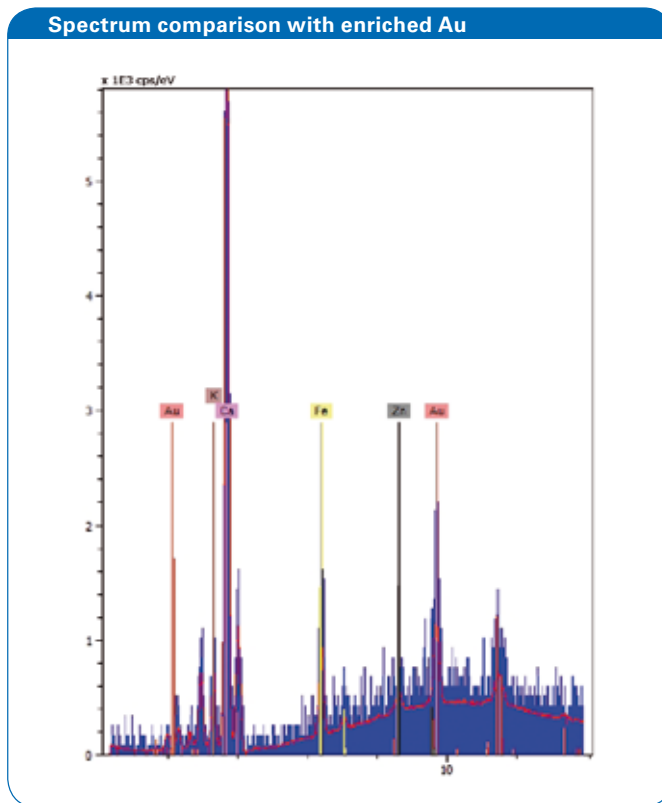


Fig. 7 Comparison of spectra with enriched Au from a single point (blue) and from a larger area (red)

● **Bruker Nano GmbH**  
Berlin · Germany  
Phone +49 (30) 670990-0  
Fax +49 (30) 670990-30  
[info.bna@bruker.com](mailto:info.bna@bruker.com)

[www.bruker.com/m4tornado](http://www.bruker.com/m4tornado)

**Bruker Singapore Pte. Ltd.**  
The Helios · Singapore  
Phone +65 (6500) 7288  
Fax +65 (6500) 7289  
[info.bna.sg@bruker.com](mailto:info.bna.sg@bruker.com)

