

# Laser post-ionization (MALDI-2) coupled to a timsTOF fleX improves the limit of detection for statin drug compounds in MALDI-MS imaging

Jan Schwenzfeier<sup>1</sup>, Klaus Dreisewerd<sup>1,2</sup>, Nana-Maria Wagner<sup>3</sup>, and Jens Soltwisch<sup>1,2</sup>



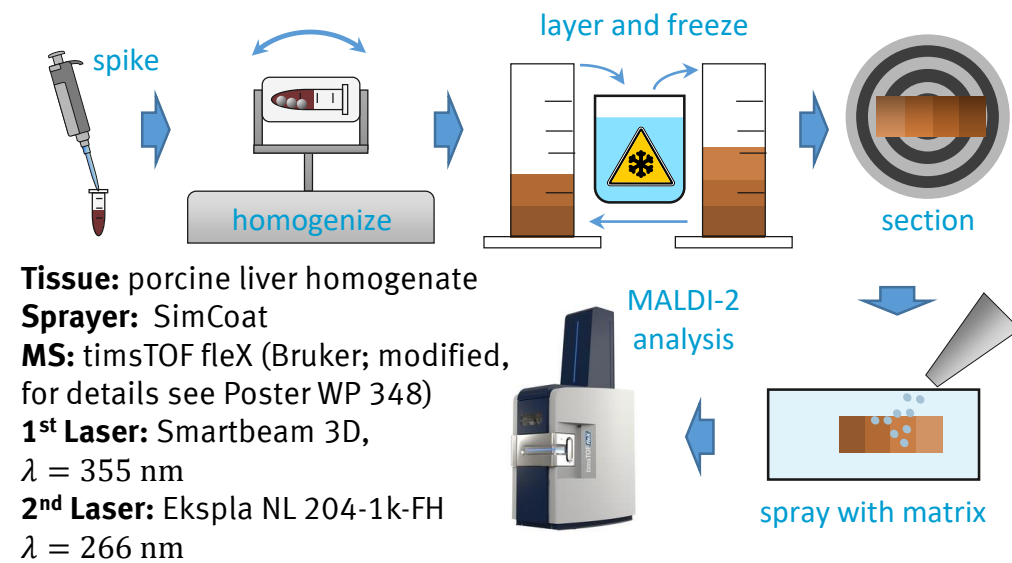
1: Institute of Hygiene, University of Münster, Germany  
2: Interdisciplinary Center for Clinical Research (IZKF), University of Münster, Germany

3: Departments of Anesthesiology and Intensive Care Medicine, University Hospital Münster, Germany

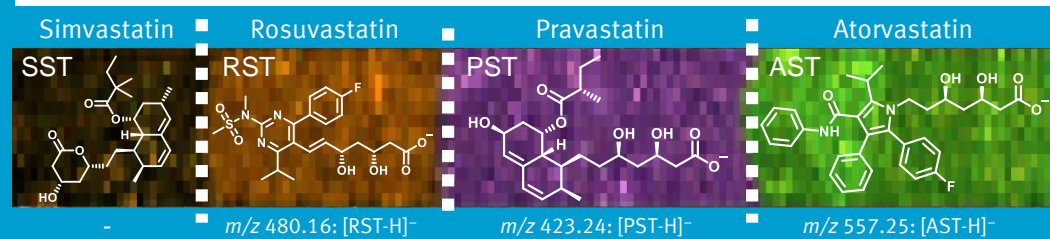
## Why statins?

- ◆ Statins comprise some of the most prescribed drugs
- ◆ Inhibition of cholesterol synthesis
- ◆ Prevention of coronary artery disease (CAD)
- ◆ May cause adverse effects in muscles and liver
- ◆ Side effects may differ for lipophilic vs. hydrophilic compounds

## Workflow



## Parameter Optimization



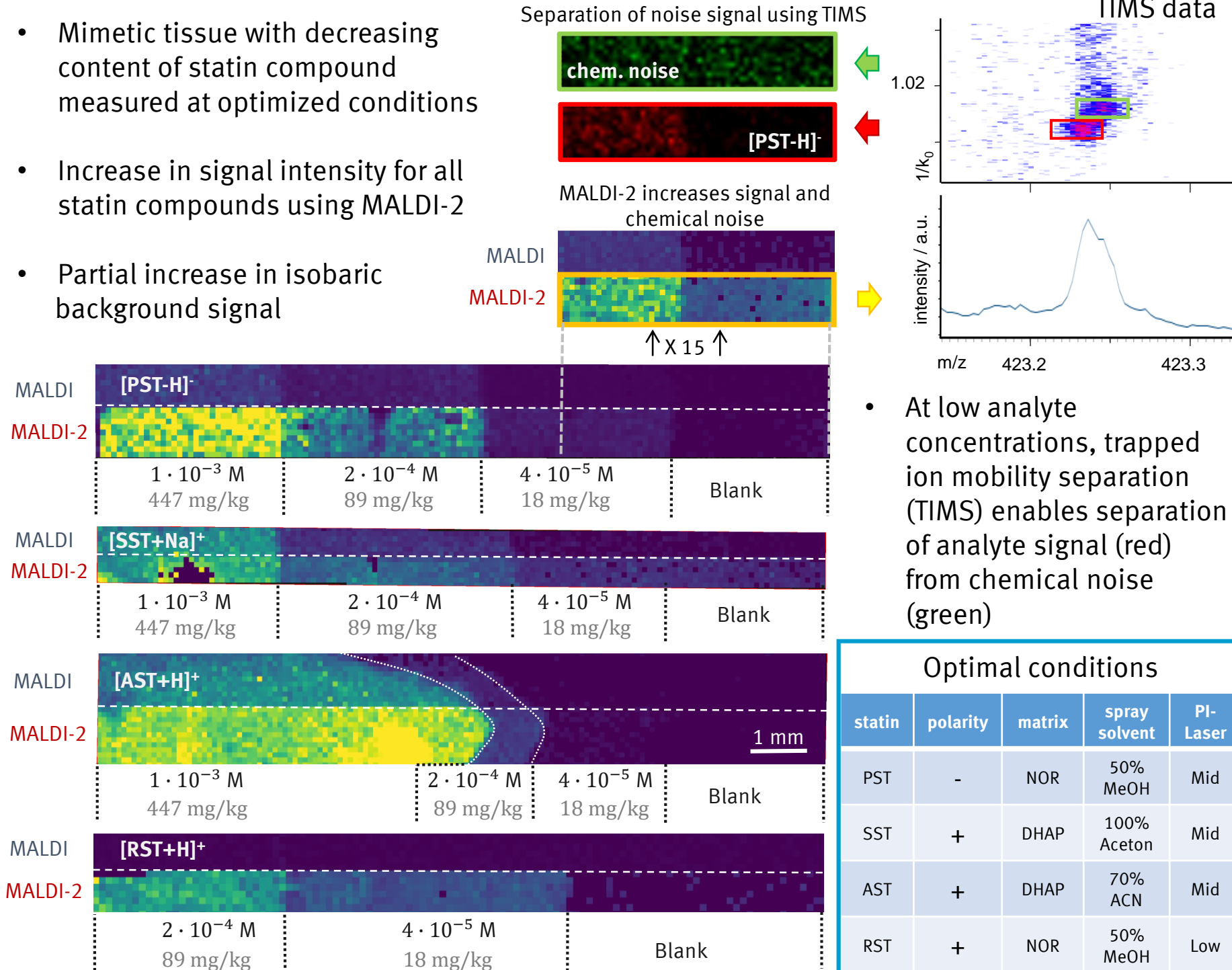
Mimetic tissue with 4 layers containing 1 statin each

Systematic variation of:

- **Matrix**
  - type (2,5-DHAP, Norharmane (NOR), PNA)
  - preparation (solvent system, spray parameters)
- **MALDI-2 parameters**
  - desorption laser pulse energy
  - post-ionization laser pulse energy
  - polarity

## Limits of detection

- Mimetic tissue with decreasing content of statin compound measured at optimized conditions
- Increase in signal intensity for all statin compounds using MALDI-2
- Partial increase in isobaric background signal



## Conclusions and Outlook

- Systematic optimization revealed polarity of the measurement, solvent type and spraying conditions as well as post-ionization laser pulse energy as key parameters
- MALDI-2 increases signal intensity for all investigated statin compounds under MALDI-MS Imaging conditions
- MALDI-2 also increases background signals
- TIMS can be used to isolate analyte signal
- Software needed to determine limits of detection of TIMS isolated signal
- Future application to dosed tissue

## Acknowledgments

We thank C. Bookmeyer and A. Potthoff for helpful discussions. Donation of porcine material by Schlachthof Tummel (Schöppingen) is gratefully acknowledged.