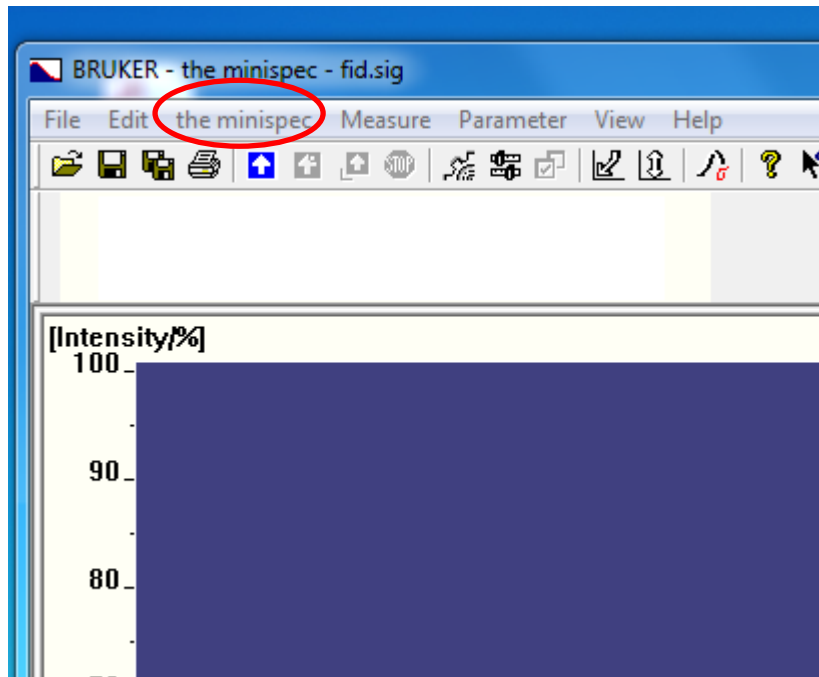


Minispec software licenses.

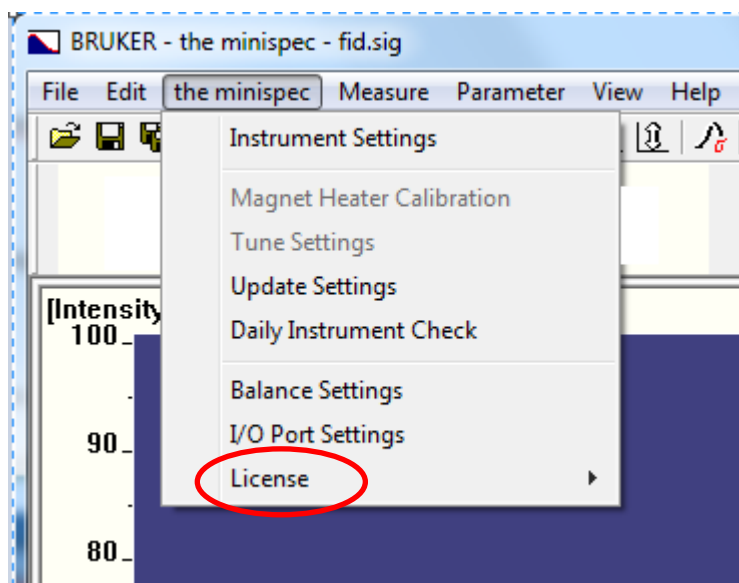
How to input license numbers.

Start the minispec software (minispec.exe not minispec plus)

When the connection to the instrument is established.

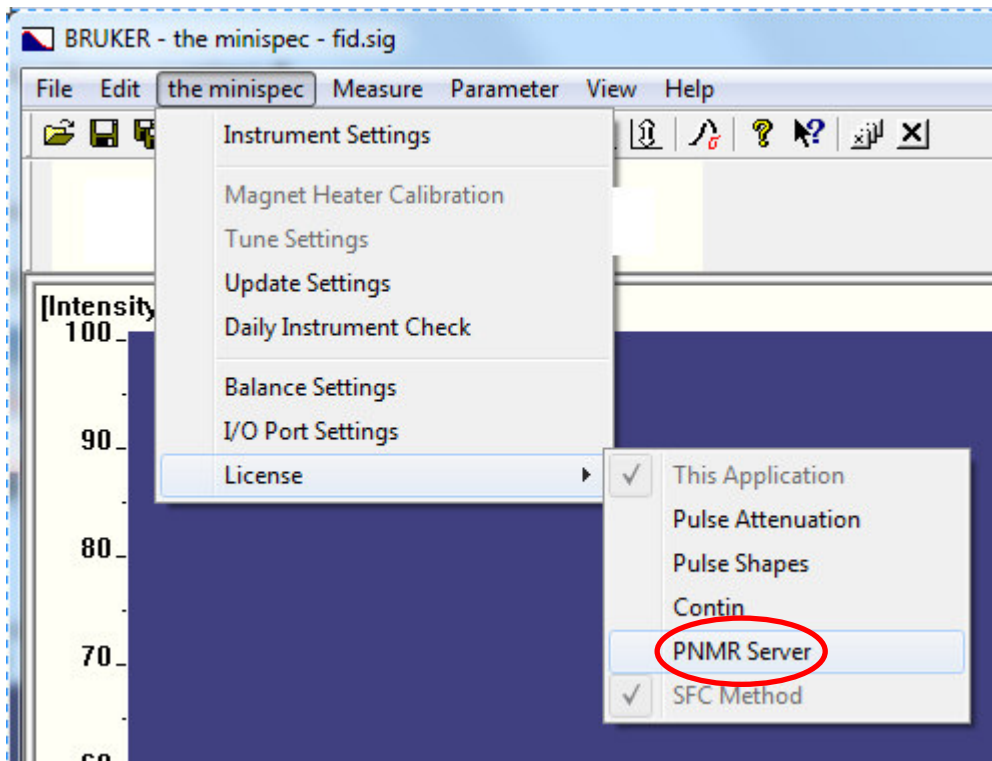


Click on the menu Item "the minispec", A downscroll menu will be displayed.

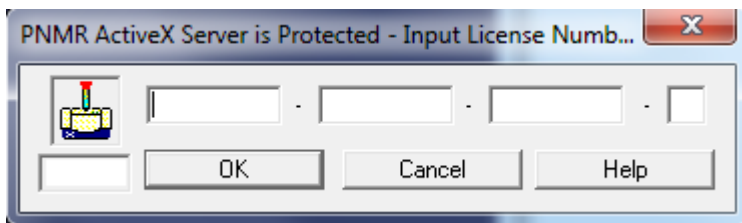


Click on License

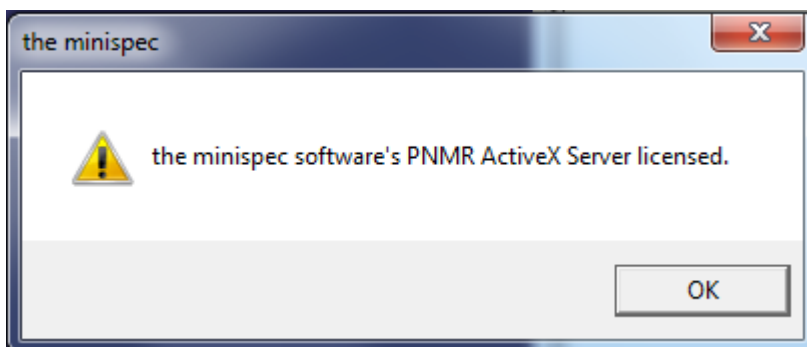
1) Input of license numbers for listed features.



Select the desired feature to license (e.g. PNMR server)



Input the License number and click ok

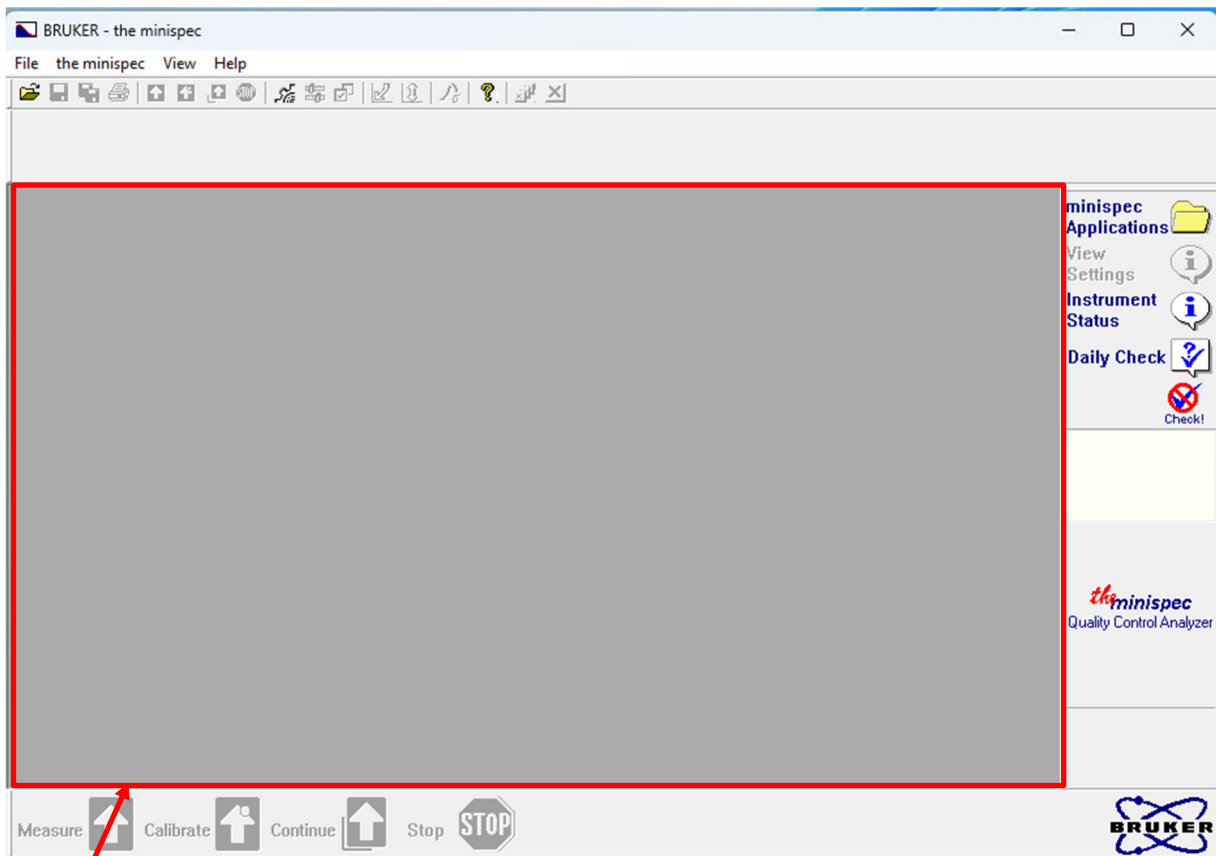
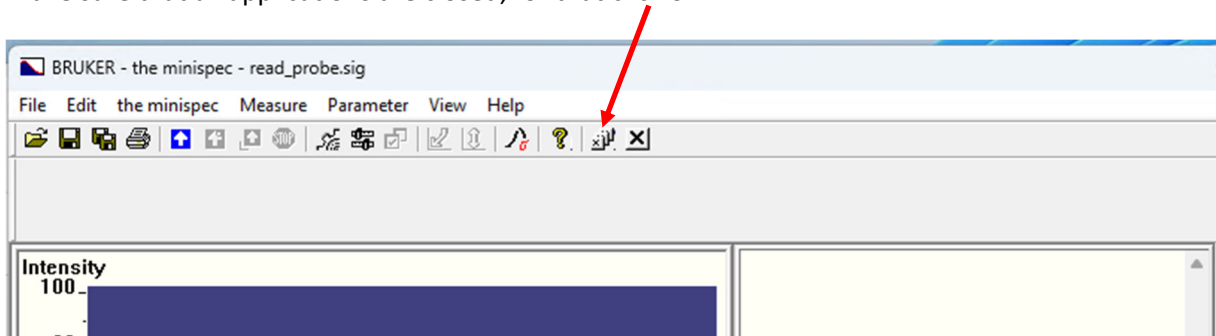


The feature is licensed (e.g. PNMR Active X) click OK

2) Input licenses for none listed features or applications

In this case proceed as following:

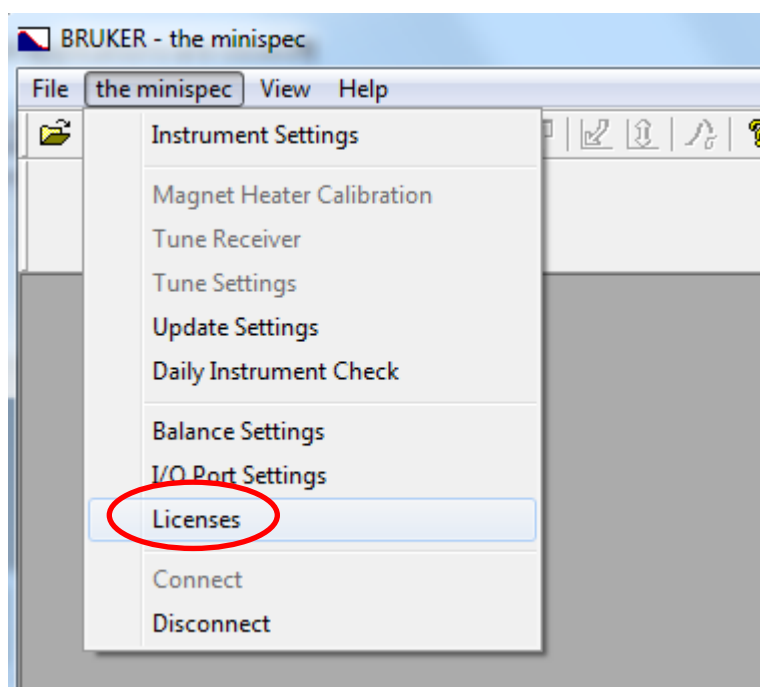
Make sure that all applications are closed, for that click on



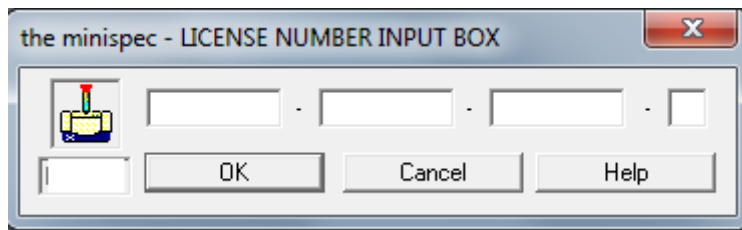
The main window is now grey.



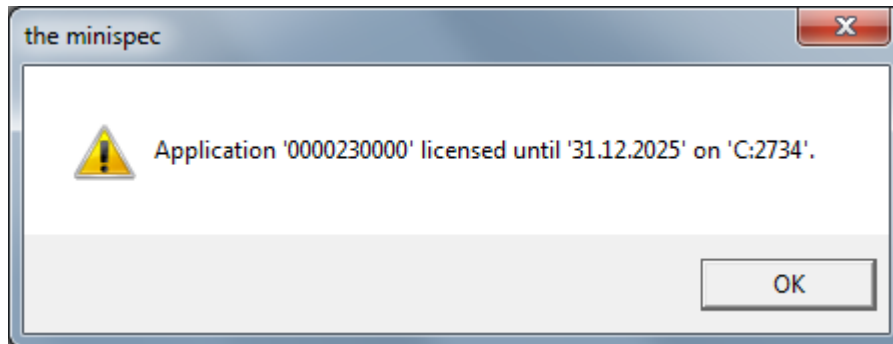
Click on the menu Item "the minispec", A downscroll menu will be displayed.



Click on Licenses



Input the License number and click ok



The feature or application is licensed.

Click OK.