

Lipid Nanoparticle Component Analysis by MALDI Using timsTOF fleX

All four LNP components including DMG-PEG 2000, a PEGylated lipid, DSPC, a phospholipid, DOTAP, an ionizable lipid, and cholesterol were analyzed using MALDI-TIMS workflow on a timsTOF fleX to determine the accurate m/z and CCS values. MALDI analysis of the PEGylated lipid revealed seven minor polymer distributions in addition to the major one. Four of those minor distributions had M_n values higher than the major one.

Introduction

Lipid nanoparticles (LNPs) were proven to be clinically effective drug delivery systems for mRNA vaccine payloads. They are the most important non-viral delivery vehicles for gene therapy. LNPs usually include four components: a PEGylated lipid, an ionizable lipid, a helper phospholipid, and cholesterol. These components together protect and encapsulate mRNA molecules. PEGylated lipids play an important role in improving the colloidal stability of LNPs in biological fluids and regulating the LNP uptake by filter organs [1]. Previously, ESI trapped ion mobility spectrometry (ESI-TIMS) was demonstrated to be a very effective platform for LNP component characterization [2]. This study focuses on thorough characterization of LNP components by MALDI-TIMS that provides complementary data to the ESI-based approach.

Keywords:
Lipid nanoparticles,
PEGylated lipids, MALDI,
timsTOF, CCS

Methods

The following LNP components were used in this study: DMG-PEG 2000 (a PEGylated lipid), DOTAP (an ionizable lipid), DSPC (a helper phospholipid), and cholesterol (Figure 1). DSPC, DOTAP, and DMG-PEG-2000 were purchased from Avanti Polar Lipids (Alabaster, AL) and cholesterol from Sigma (St. Louis, MO). An LNP component mixture and three individual small molecule LNP components were prepared with a solution of DHB in THF as a matrix. The mixture was generated by mixing DMG-PEG 2000, cholesterol, DOTAP, and DSPC solutions in 100:20:1:1 molar ratio. DMG-PEG 2000 was prepared with a solution of CHCA in THF as a matrix and sodium trifluoroacetate as a cationizing additive. The measurements were performed with TIMS OFF and ON using a timsTOF fleX mass spectrometer (Bruker Scientific, Billerica, MA) equipped with a dual ionization ESI/MALDI source, a TIMS cartridge, and a smartbeam 3D 10 kHz laser. MALDI spectra were acquired using 2000 laser shots in TIMS ON mode and 4000 laser shots in TIMS OFF mode. PEGylated lipid spectra were post-processed in PolyTools software.

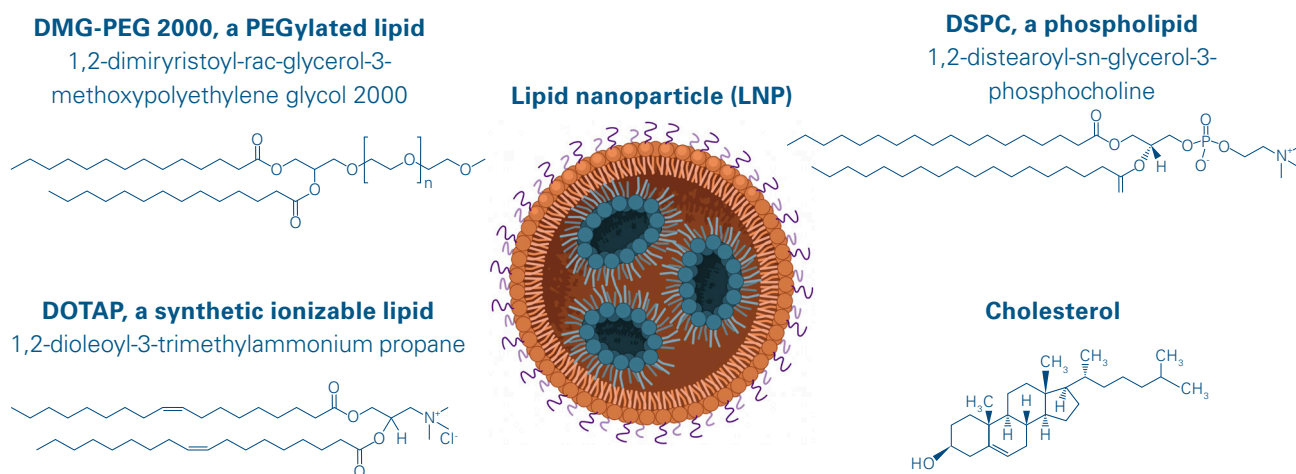


Figure 1
Lipid nanoparticle components

Results

Cholesterol was measured as $[M-H_2O+H]^+$ ion, DOTAP as $[M]^+$ ion, and DSPC as $[M+H]^+$ ion in the LNP component mixture. High resolution accurate mass measurements resulted in mass errors less than 1 ppm for these three components (Figure 2).

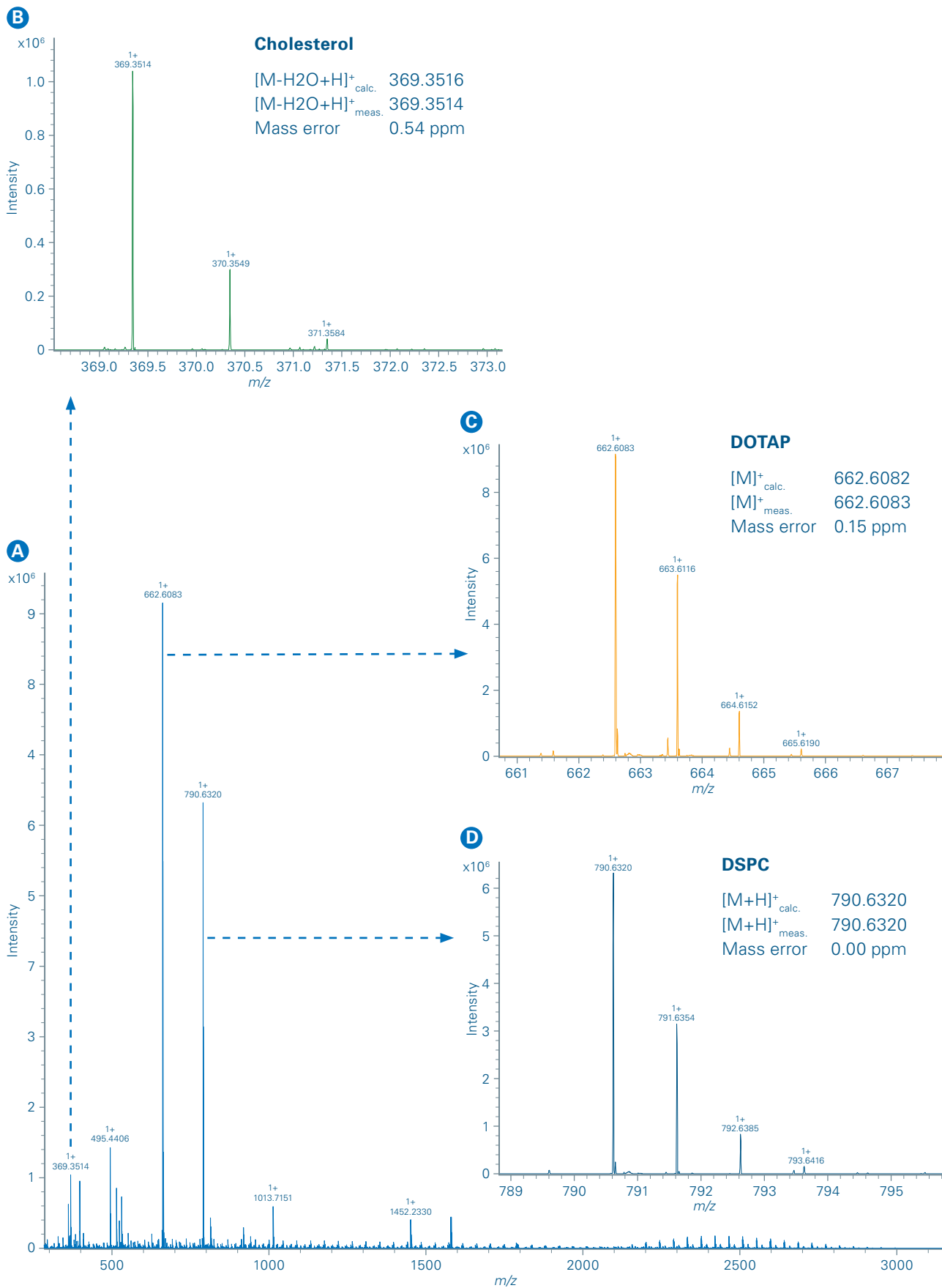


Figure 2

MALDI spectrum of the LNP component mixture **(A)** showing accurate mass measurements of cholesterol at m/z 369.3516 **(B)**, DOTAP at m/z 662.6082 **(C)**, and **(D)** DSPC at m/z 790.6320

The measurements of the individual LNP components and the mixture were repeated in TIMS ON mode to obtain collisional cross section (CCS) values. The mobilograms of the LNP components allowed determining the CCS values for cholesterol as 204.7 Å², for DOTAP 280.1 Å², and for DSPC 297.6 Å² (Figure 3).

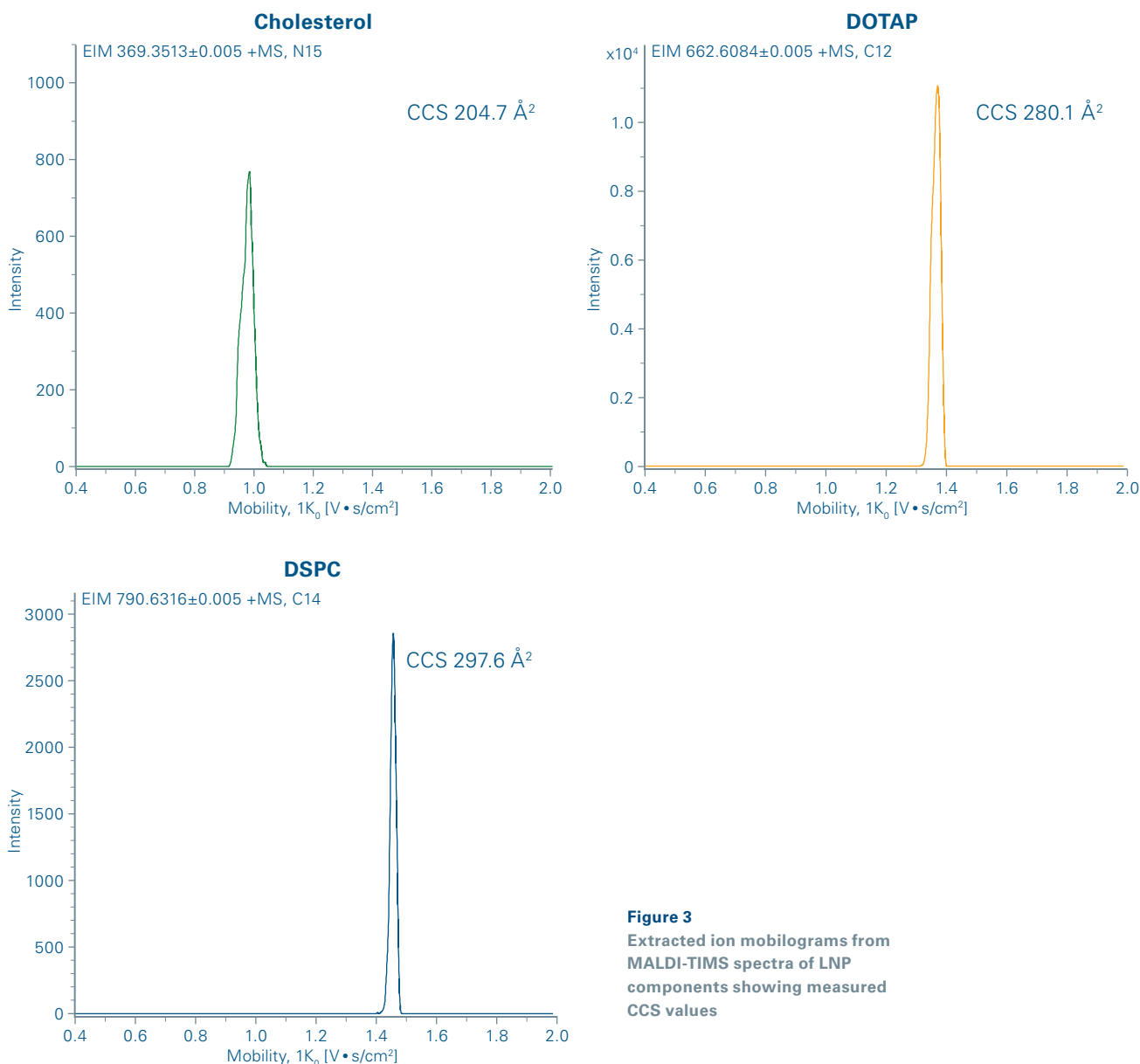


Figure 3
Extracted ion mobilograms from MALDI-TIMS spectra of LNP components showing measured CCS values

Ultrahigh resolution MALDI spectrum of DMG-PEG 2000 showed multiple minor polymer distributions in addition to the main one (Figure 4A). The resolution of many oligomers exceeded 90,000. For example, the oligomer at m/z 2574.6468 had resolution 94,214 (Figure 4B).

More detailed post-processing in PolyTools revealed a major distribution with M_n 2521 and more than 30 oligomers. In addition, the spectrum contained 7 other minor polymer distributions containing more than 10 oligomers that were easily discernible in the residual Kendrick mass plot (Figure 4C-4E). Four of those minor distributions had M_n values higher than the major one ranging from 2706 to 3207 (Figure 4E).

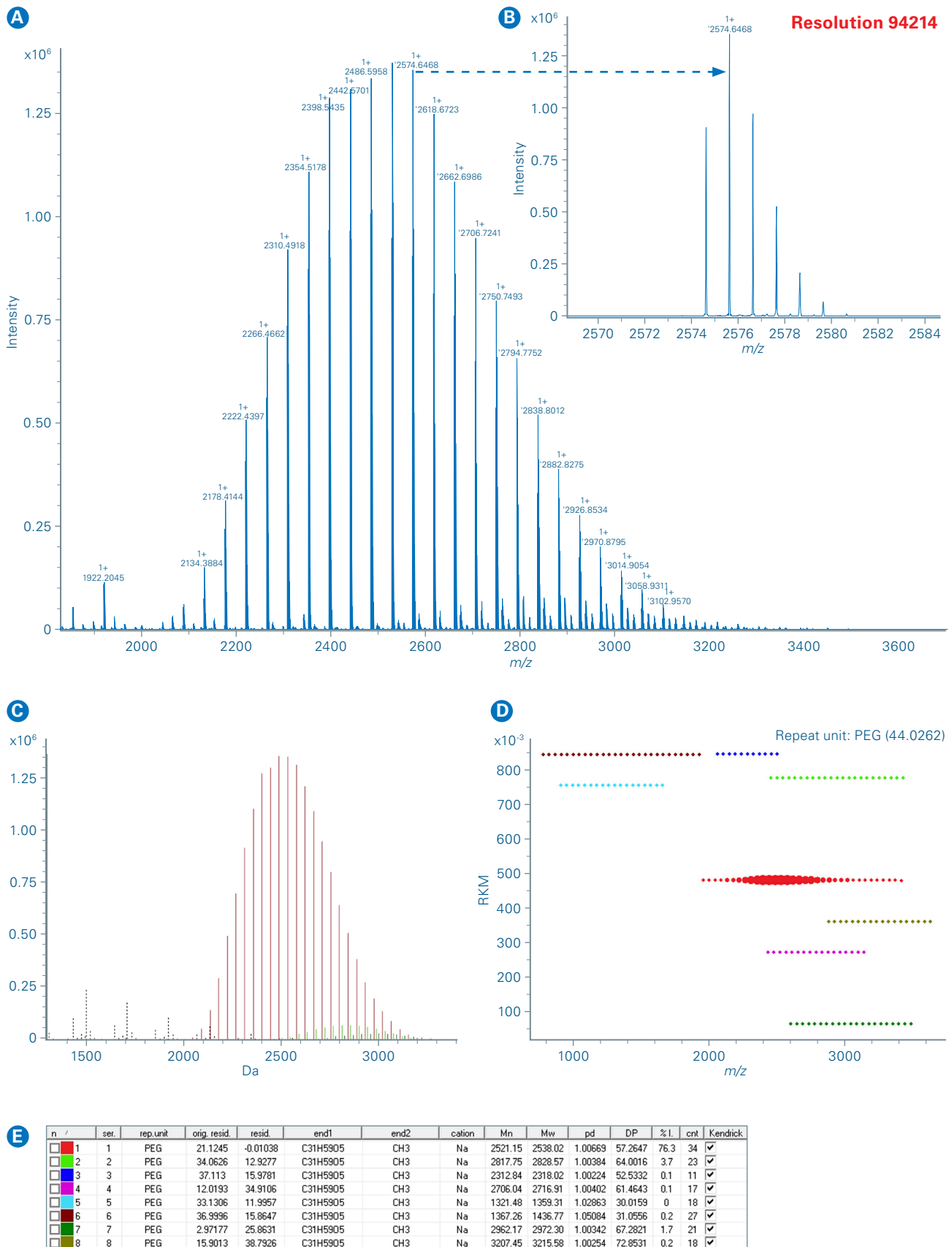


Figure 4

MALDI spectrum of DMG-PEG 2000 (A) showing ultrahigh resolution of a selected oligomer at m/z 2574.6468 (B), PEG distributions calculated in PolyTools software (C), residual Kendrick mass plot of 8 PEG distributions (D), and the table with calculated Mn, Mw, and polydispersity values (E).

The MALDI-TIMS spectra of DMG-PEG 2000 were acquired after lowering TIMS IN cartridge pressure to 2.0 mbar. The spectrum in Figure 5 is shown as a heat map. The CCS value for the oligomer at the center of the polymer distribution ($[M+Na]^+$ ion at m/z 2530.6262) was determined to be 536.7 \AA^2

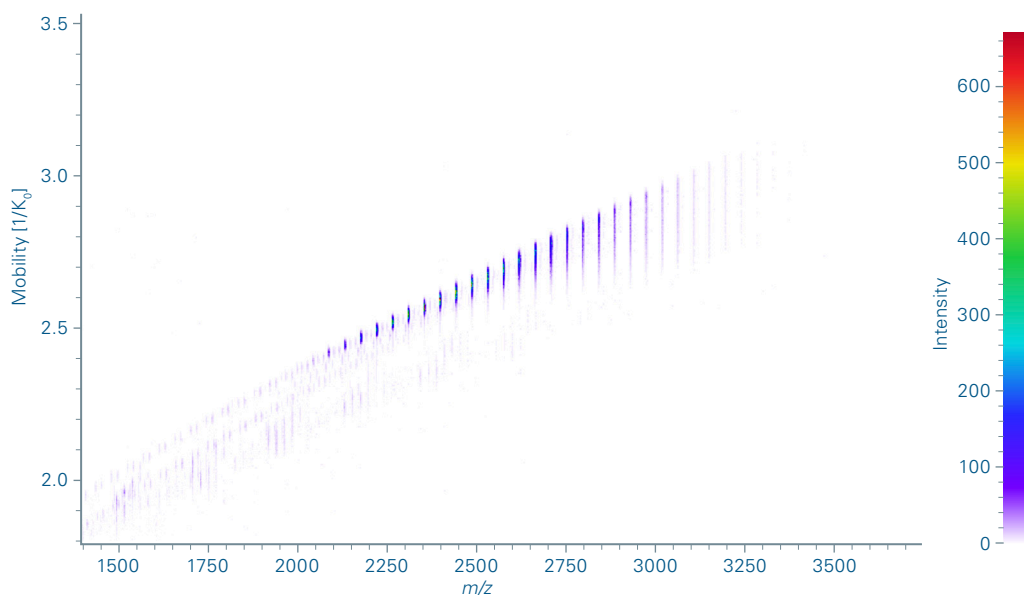


Figure 5
A heat map view of the MALDI-TIMS spectrum of DMG-PEG 2000

Conclusions

- MALDI-TIMS workflow is an effective approach to characterize all LNP components ranging from cholesterol to PEGylated lipids.
- Characterization of PEGylated lipids by MALDI allows accurate determination of M_n , M_w , and polydispersity.
- MALDI analysis of PEGylated lipids allows straightforward detection of minor polymer distributions/impurities and their accurate characterization.
- MALDI-TIMS workflow applied to LNP components provides complementary data to ESI-TIMS workflow.

References

- [1] Gote V, Bolla PK, Kommineni N, Butreddy A, Nukala PK, Palakurthi SS, Khan W (2023). *Int. J. Mol. Sci.* **24**(3):2700. <https://doi.org/10.3390/ijms24032700>
- [2] Wang B, Jeck V, Lewis M, Peng X, Forsberg E (2023). *Bruker App. Note LCMS-209*.
- [3] The LNP image was created with BioRender.com.

For Research Use Only. Not for use in clinical diagnostic procedures.

Bruker Switzerland AG

Fällanden · Switzerland
Phone +41 44 825 91 11

Bruker Scientific LLC

Billerica, MA · USA
Phone +1 (978) 663-3660

