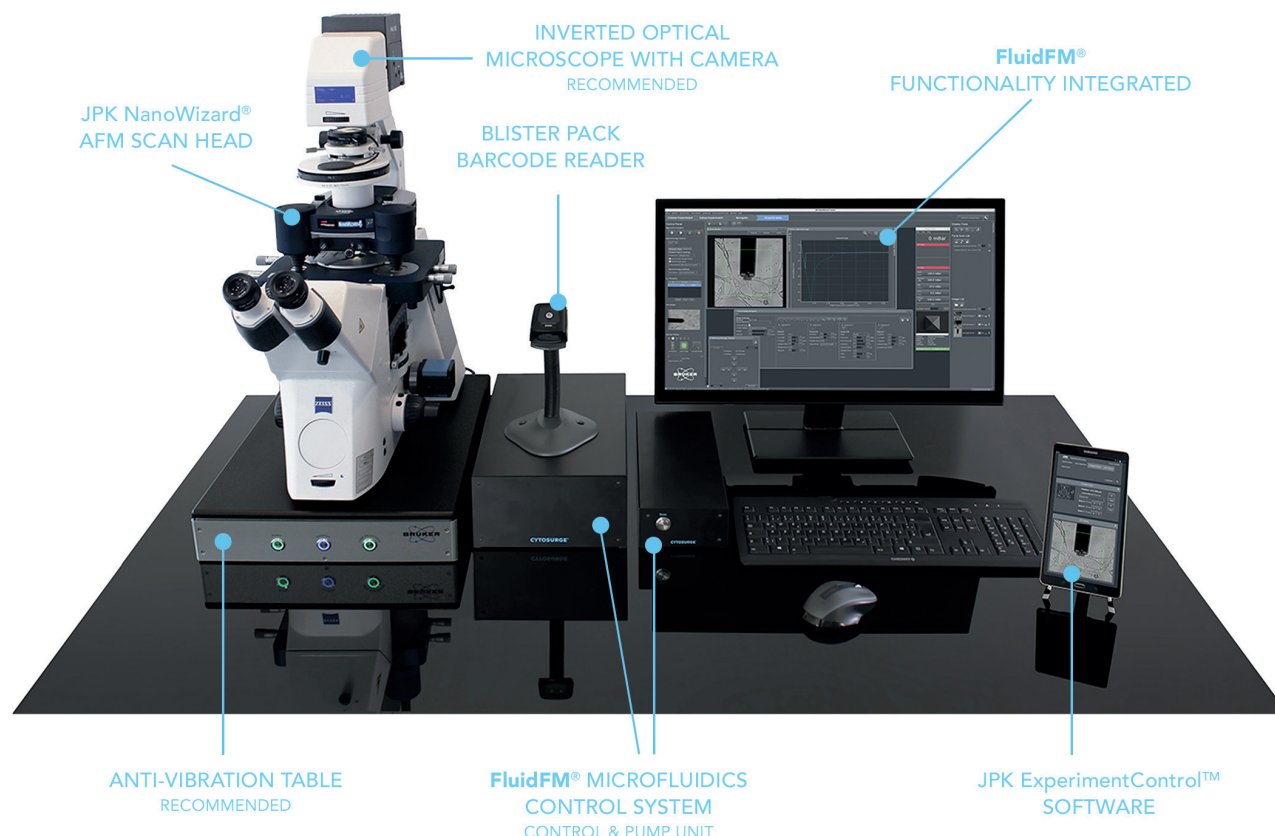


POWERFUL UPGRADE SOLUTION.

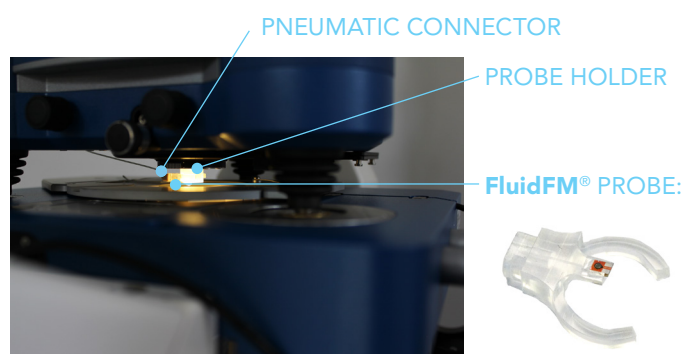
FluidFM® ADD-ON FOR YOUR JPK AFM SYSTEM



POWERFUL UPGRADE SOLUTION. A FluidFM® ADD-ON installed on a JPK NanoWizard 4 XP.

Empower your JPK AFM beyond imaging. The FluidFM ADD-ON from Cytosurge opens the door to a wide range of new applications. From single cell biology to material sciences – harness the possibilities provided by FluidFM using the AFM you already own.

Applications ranging from single cell isolation to colloidal spectroscopy measurements become readily possible with this powerful upgrade solution. BioAFM users have now, for example, access to single cell gene editing, much faster mechanical



CLIP IT ON. Close-up of the JPK NanoWizard® scan head with a mounted FluidFM probe.

sub-nm

XYZ-RESOLUTION

pN

FORCE CONTROL

100% AFM

CAPABILITIES

100% FluidFM®

APPLICATIONS

measurements like single cell force spectroscopy (SCFS), and direct printing of sub-micron feature patterns. FluidFM also enables the easy manipulation and measurement of micron-sized colloids, mammalian cells, microorganisms such as yeast, algae, bacteria, or even single virus particles.

The mentioned applications are enabled by the unique and patented FluidFM probes, tailored to the geometrical and physical requirements of the AFM. Each probe type with its specific tip shape, aperture size and mechanical properties can be used for several applications.

FluidFM micropipette		FluidFM nanosyringe		FluidFM nanopipette	
	2, 4, 8 μm aperture		600 nm aperture		300 nm aperture
Adhesion of single cells	Colloidal spectroscopy	Cell isolation	Nano-injection into single cells	Nano-extraction from single cells	Spotting
			Adhesion of single bacteria	Nano-printing	

UNLEASH YOUR AFM. With the three distinct FluidFM probe families you get access to unique and high impact applications. More information on the diverse applications: www.cytosurge.com/page/fluidfm-addon

FluidFM® ADD-ON. TAILORED TO YOUR NEEDS.

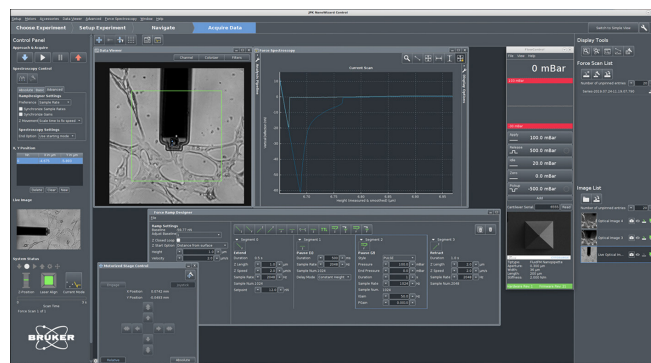
The **FluidFM® ADD-ON** is compatible with all JPK NanoWizard®, ForceRobot® and CellHesion® AFMs. All the capabilities of the optical as well as the atomic force microscope are fully available during FluidFM operations.

To offer you the best possible solution for your requirements, we have created a selection of bespoke packages.

The **Silver package** is the ideal choice for researchers looking for an economical start in the world of FluidFM. The Silver package offers 12 months warranty and includes a FluidFM probe Starter kit containing 3 probes.

The **Gold package** is the most popular choice, maximizing the application range through software integration of the FluidFM system into the JPK software. The Gold package ensures a smooth journey in the world of FluidFM and includes a FluidFM probe Explorer kit containing a selection of 10 micropipettes and nanopipettes of various stiffnesses and apertures. You also benefit from 24 months warranty on the system.

The **Platinum package** is the best choice if you want to experience the full power of the premium FluidFM ADD-ON



JPK SPMControl SOFTWARE. Screenshot of the JPK SPMControl software with integrated FluidFM functionality, featuring a phase contrast image of a FluidFM cantilever.

solution. With a comprehensive integration into the JPK software, it combines the full FluidFM application range with highest ease of use, leading also to highest possible throughputs. With the Platinum package, you have 36 months warranty and you can take advantage of the comprehensive FluidFM probe Discovery kit with 20 probes.

See the detailed information about the packages on the next page.

FluidFM® ADD-ON Packages	SILVER	GOLD	PLATINUM
Probes kit Predefined selection of different probes of various stiffnesses and apertures.	3 probes FluidFM Starter kit	10 probes FluidFM Explorer kit	20 probes FluidFM Discovery kit
Support Provided by JPK.	✓	✓	✓
Warranty	12 months	24 months	36 months
FluidFM MFCS Microfluidics control unit + pump unit + tubing. To aspirate or release liquids through the FluidFM probe.	V1	V2 ¹⁾	V2 ¹⁾
FluidFM CORA operator software Including free software updates.	✓	✓	✓
FlowControl software by JPK Control FluidFM on your JPK Linux PC.	✓	✓	✓
AFM specific accessories Customized solution for your AFM: Pneumatic connections, adapters and a tailor-made FluidFM probe holder assuring safe, tight and reliable mounting of FluidFM probes.	✓	✓	✓
Barcode reader module Integrated into CORA and FlowControl software. To access all relevant probe characteristics, most importantly a unique SEM image of every probe.	✓	✓	✓
FluidFM liquid trap Reduces the risk of liquid damage.	✓	✓	✓
API access to FluidFM microfluidics control system		✓	✓
FluidFM manual pressure kit For additional under- and overpressure.		✓	✓
Standard software integration ²⁾ Control FluidFM within the AFM software.		✓	
Premium software integration ²⁾ Advanced FluidFM workflows and tools within the AFM software.			✓

¹⁾ Compared to its predecessor, the FluidFM MFCS V2 features a new integrated leak detection guaranteeing that every probe is tightly gripped before an experiment.

²⁾ The integration requires the JPK V7 software or newer.

FluidFM Starter kit

		Stiffness in N/m				
		Kit Code: 1980	0.3	0.6	2	4
Apertrue in μm	Nanopipette	0.3			1 x 2005	
	Nanosyringe	0.8				
	Micro-pipettes	2			1 x 1442	
		4				
		8			1 x 1448	

The white cells show the product codes and the amount of this type contained in the kit.

FluidFM Explorer kit

		Stiffness in N/m				
		Kit Code: 2007	0.3	0.6	2	4
Apertrue in μm	Nanopipette	0.3		1 x 2004	2 x 2005	
	Nanosyringe	0.8				
	Micro-pipettes	2	1 x 1983		2 x 1442	
		4	1 x 1992		1 x 1445	
		8	1 x 1998		1 x 1448	

The white cells show the product codes and the amount of this type contained in the kit.

FluidFM Discovery kit

		Stiffness in N/m				
		Kit Code: 2011	0.3	0.6	2	4
Apertrue in μm	Prototyping	n.a.		1 x 2630	1 x 2638	
	Nanopipette	0.3		2 x 2004	2 x 2005	
	Nanosyringe	0.8			4 x 2627	
	Micro-pipettes	2	2 x 1983		2 x 1442	
		4	1 x 1992		2 x 1445	
		8	1 x 1998		2 x 1448	

The white cells show the product codes and the amount of this type contained in the kit.