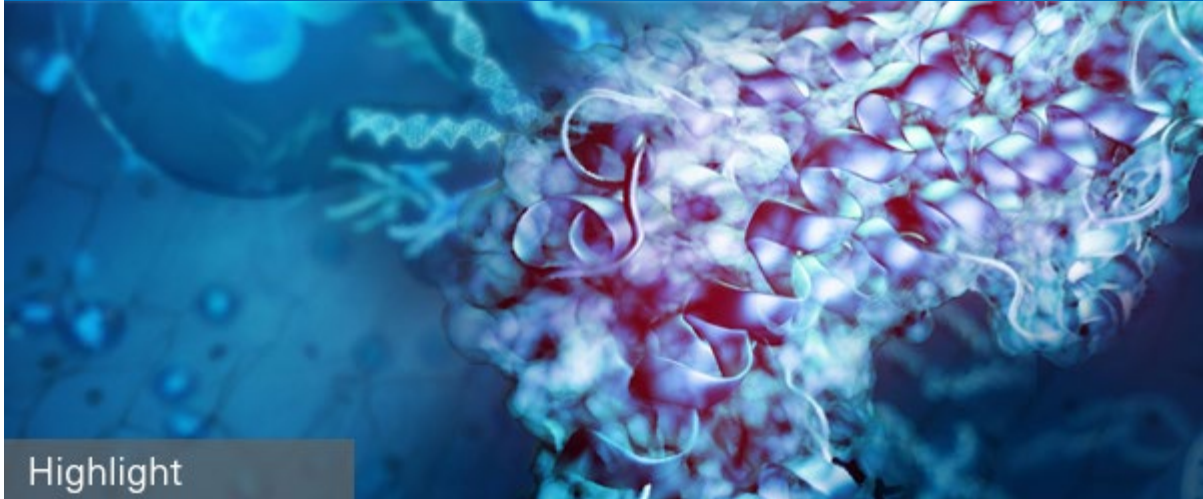


# MassSpectator



Highlight

## Join Bruker's ASMS eXceed Symposia and listen to experts in Proteomics, Pharma, and Imaging presenting cutting-edge discoveries

Save your seat at Bruker's eXceed Symposia and discover new developments and innovations from Bruker in Proteomics, Pharma and Imaging. Be the first to experience the cutting-edge discoveries in mass spectrometry systems optimized to accelerate scientific research. You will hear from Dr. Vicki Wysocki, Professor, Eminent Scholar of Macromolecular Structure and Function at Ohio State University Medical Center and Dr. Jeff Spraggins, Research Assistant Professor, Mass Spectrometry Research Center, Vanderbilt University Medical Center, to name a few.

[Register now](#)



## Joint Center of Excellence for Translational Omics

Bruker and the Translational Metabolic Laboratory (TML) at Radboud University Medical Center (UMC) have jointly established a Center of Excellence (CoE) for Translational Omics. Under the leadership of Professor Alain van Gool, the joint CoE will center around the development of 4D omics methods using the timsTOF Pro that was recently acquired by the TML.

[Learn more](#)

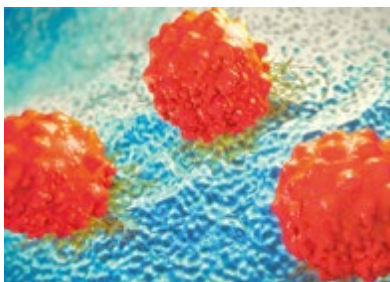


Highlight

## Download the webinar with Dr. Lewis at the National Phenome Center on MS (TOF and MRMS) and NMR solutions

Download the webinar with Dr. Lewis at the National Phenome Center to learn more about addressing these challenging needs using analytical instrumentation, such as MS (TOF and MRMS) and NMR solutions and software, seamlessly integrated to provide high quality data for biological interpretation. As biobanks and clinics open their doors to the promise of metabolomic phenotyping for understanding population health, powerful analytical solutions capable of large-scale deployment are becoming more mission-critical.

[Learn more](#)



## Visualization of different chemical signals related to primary metastasis

In this study on a high grade serous ovarian cancer, a MALDI Imaging protocol was optimized for a novel 3D cell and tissue explant coculture. Norepinephrine was identified as putative metastatic signaling molecule released by the ovary in response to tumorigenic FTE-derived cells. These data demonstrate the applicability of MALDI Imaging to study tissue and cell interactions to better understand in vivo biology.

[Learn more](#)

## Oligonucleotide analysis by MALDI and Electrospray Mass Spectrometry

Oligonucleotides are vital research tools with a wide range of applications. ESI and MALDI mass spectrometry are essential to obtain both accurate molecular weight, sequence confirmation, and to



characterizing impurities. BioPharma Compass is an integrated comprehensive software for fast and easy screening enabling workflows for routine and in-depth oligonucleotide analysis.

[Learn more](#)



### **Real-time, label-free (RT-LF) analysis utilizing SPR Detection**

SPR detection is a powerful tool for the biophysical characterization of small molecule drugs and drug candidates. The next generation RT-LF analysis platform, Sierra SPR-32, was evaluated for its assay flexibility and rapid kinetic characterization of binding interactions. Equipped with a 4x8 array of 32 individually addressable detection spots, the Sierra SPR-32 system is uniquely configured to provide active and control binding data for each sample injection.

[Learn more](#)

**Application of New Mass Spectrometric Methods and Workflows to Determine Authenticity of Food**

**LIVE WEBCAST**  
Tuesday, May 28, 2019  
1pm EDT | 12pm CDT | 10am PDT

**BRUKER** **LC|GC**

Highlight

### **Register for this webinar on identifying food fraud in extra virgin olive oil using Mass Spectrometry methods**

The increasing popularity of extra virgin olive oil and the increasing problem of food fraud have provided the need for quality and authenticity control. Typical problems

are mislabeling of protected designation of origin or edible oil adulteration. This webinar provides an overview about the capabilities of different mass spectrometric methods in combination with metabolomics methods using new software tools in combination with UHPLC-QTOF and GC-APCI-QTOF to identify origin markers.

[Register now](#)

## Events



June 2 - 6, 2019



June 23 - 27, 2019



June 26 - 28, 2019

## Latest media from Bruker



[Tune in to webinars](#)



[Download literature](#)



[Watch recent videos](#)

## Follow Us

